

PRODUCT DATA SHEET

REFLEX DOWNHOLE MOTORS™

Drilling Optimisation

INDEX™



Adjust drill direction with ease.

REFLEX DOWNHOLE MOTORS™

Drilling Optimisation



Description

Customised REFLEX DOWNHOLE MOTORS™ provide the option to make alterations to the drill direction during drilling. Where there is a need for directional change, deflection settings can be adjusted simply and quickly by the drill operator to ensure intersection of the target.

The system combines an adjustable bent housing with a specially developed mud-lubricated friction bearing pack. The adjustable bent housing enables the operator to adjust deflection settings onsite without the time consuming need to change bent subs, and the mud-lubricated friction bearing makes the instrument cheaper to operate, faster to service and able to withstand the high-speed rotation required to drill hard rock.

Application

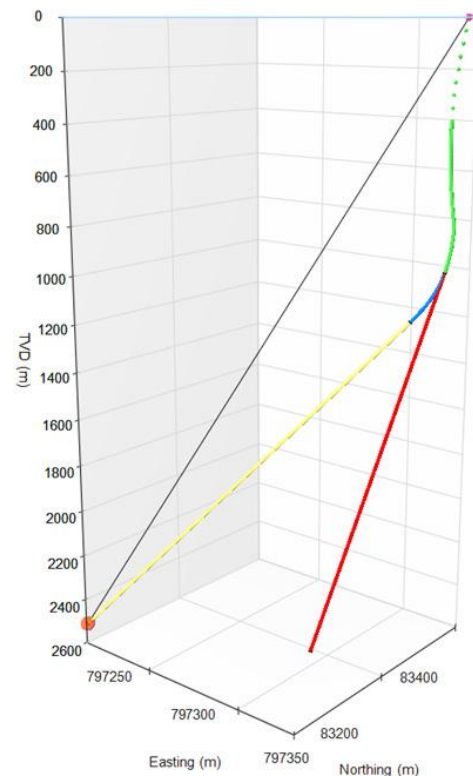
REFLEX DOWNHOLE MOTORS can be used to:

- Intersect multiple planned geological targets from one parent hole
- Intersect a single known target as a 'planned collision' e.g. paste holes of breakthrough holes
- Control deviation by steering the borehole back on path to maintain course.



Advantages

- Adjustable bent housing (0-2 or 0-1 degrees) – choose from a variety of settings to suit your required build rate
- Multiple targets can be drilled without the expense of drilling the initial section of the borehole
- More robust and durable – impact resistant tungsten impregnated load bearings
- High-speed Nitrile power sections more suited to diamond impregnated bits
- NX 2 3/8" 1-2, 7 stages
- HX 2 7/8" 1-2, 5.2 stages
- Easy to operate & faster to service – low maintenance mud-lubricated bearing assembly



ASIA PACIFIC

Perth, Australia (Head Office)
+61 8 9445 4000

Indonesia
+61 (0) 21 759 11244

AFRICA

South Africa
+27 (11) 908 5595

EUROPE

Norway
+47 72 87 01 01

Germany
+49 4402 9650-0

United Kingdom
+44 (0) 1273 483 700

SOUTH AMERICA

Argentina
+54 9 261 211 3676

Brazil
+55 (47) 3404 5920

Chile
+56 (2) 2589 9300

Peru / Ecuador
+51 (1) 322 8850

NORTH AMERICA

USA / Canada
+801-364-0233

Mexico
+52 (871) 680 7146

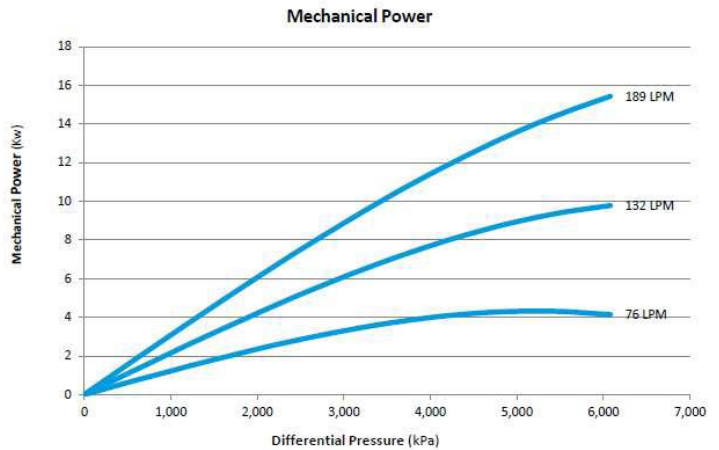
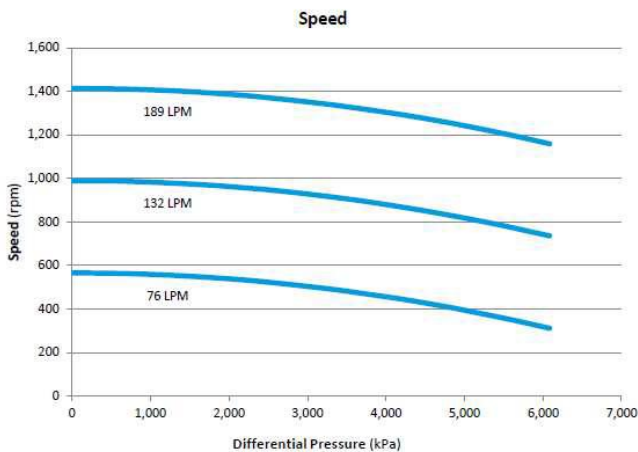
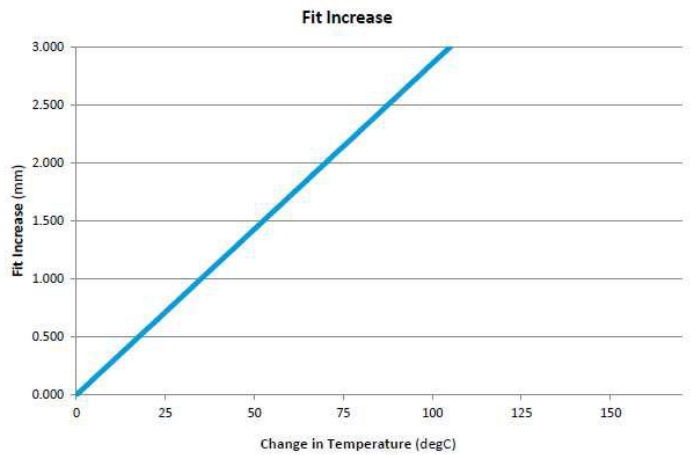
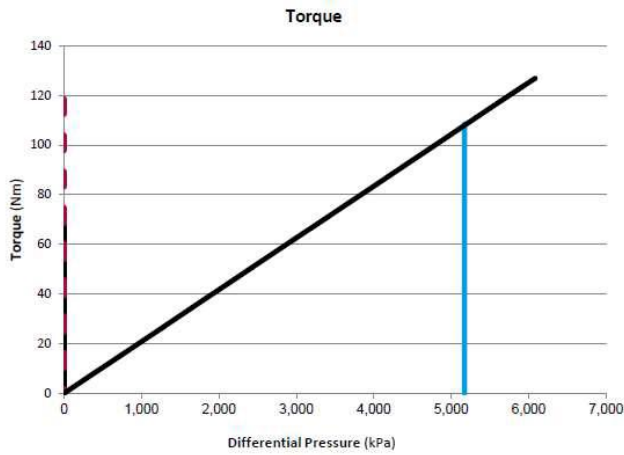
238-1240
2.375" 1:2 Lobes 4 stages

NX DHM – 2.375"

Power section specifications (metric units)

Rotor specifications		Stator specifications	
Overall length	1701.8mm	Overall length	1905.0mm
Avg. diameter	20.07mm	Tube OD	60.33mm
Contour length	1625.6mm	Contour length	1600.2mm
Eccentricity	6.76mm	Tube ID	47.63mm
Major diameter	29.59mm	Rubber cut-back	
Head diameter	31.75mm	Side 1:	152.4mm
Head length	76.2mm	Side 2:	152.4
Weight	5kg	Weight	18kg
Thread form	0.75-10UNC	Material	Alloy steel

Performance specifications				
		UF100D	POB-PRR-PXP	XTH
Flow range			76-189	LPM
Rev per unit volume			7.47	Rev/L
Speed range			565-1414	RPM
No load pressure loss			293	kPa
Max recommended pressure	- kPa	5,170	kPa	- kPa
Torque at max rec. pressure	- N-m	110	N-m	- N-m
Stall pressure	- kPa	7,760	kPa	- kPa
Stall torque	- N-m	160	N-M	- N-m



ASIA PACIFIC

Perth, Australia (Head Office)
+61 8 9445 4000

Indonesia
+61 (0) 21 759 11244

AFRICA

South Africa
+27 (11) 908 5595

EUROPE

Norway
+47 72 87 01 01

Germany
+49 4402 9650-0

United Kingdom
+44 (0) 1273 483 700

SOUTH AMERICA

Argentina
+54 9 261 211 3676

Brazil
+55 (47) 3404 5920

Chile
+56 (2) 2589 9300

Peru / Ecuador
+51 (1) 322 8850

NORTH AMERICA

USA / Canada
+801-364-0233

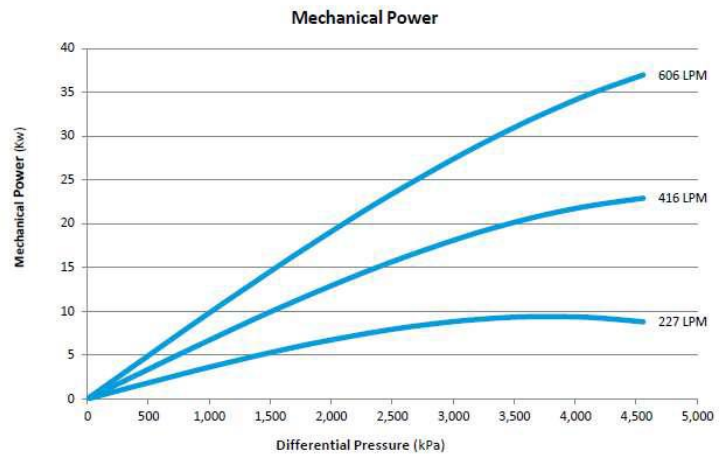
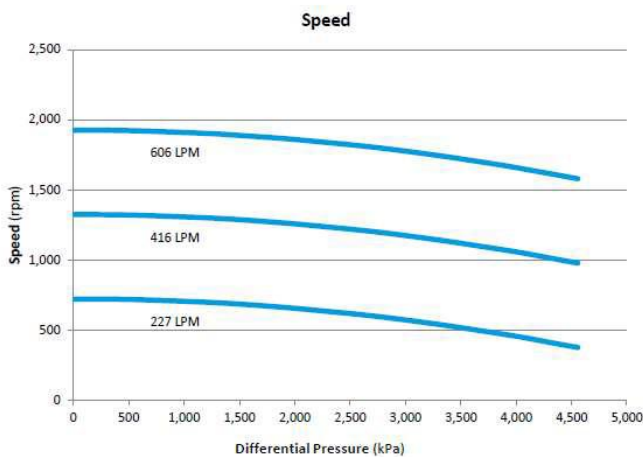
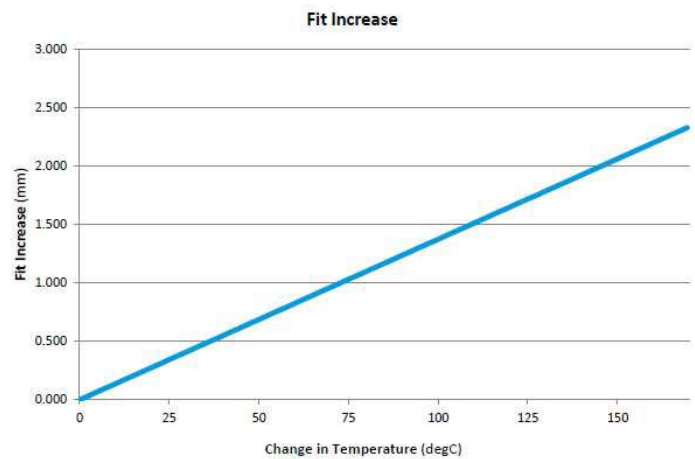
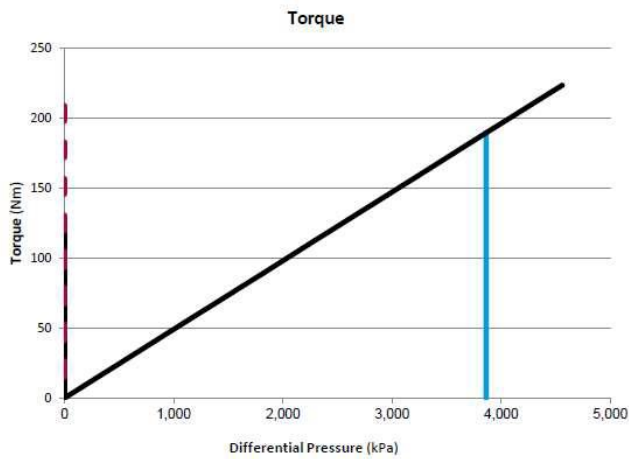
Mexico
+52 (871) 680 7146

HX DHM – 2.875”

Power section specifications (metric units)

287-1230
2.875” 1:2 Lobes 3 stages

Rotor specifications		Stator specifications		Performance specifications			
Overall length	1727.2mm	Overall length	2133.6mm	Flow range	227-606	LPM	
Avg. diameter	27.81mm	Tube OD	73.03mm	Rev per unit volume	3.18	Rev/L	
Contour length	1651.0mm	Contour length	1625.6mm	Speed range	722-1926	RPM	
Eccentricity	6.22mm	Tube ID	60.33mm	No load pressure loss	542	kPa	
Major diameter	40.26mm	Rubber cut-back					
Head diameter	41.28mm	Side 1:	76.2mm	UF100D		POB-PRR-PXP	
Head length	76.2mm	Side 2:	431.8mm	Max recommended pressure	- kPa	3,860	kPa
Weight	13kg	Weight	25kg	Torque at max rec. pressure	- N-m	190	N-m
Thread form	1.125-8 SA	Material	Alloy steel	Stall pressure	- kPa	5,790	kPa
				Stall torque	- N-m	280	N-M



ASIA PACIFIC

Perth, Australia (Head Office)
+61 8 9445 4000

Indonesia
+61 (0) 21 759 11244

AFRICA

South Africa
+27 (11) 908 5595

EUROPE

Norway
+47 72 87 01 01

Germany
+49 4402 9650-0

United Kingdom
+44 (0) 1273 483 700

SOUTH AMERICA

Argentina
+54 9 261 211 3676

Brazil
+55 (47) 3404 5920

Chile
+56 (2) 2589 9300

Peru / Ecuador
+51 (1) 322 8850

NORTH AMERICA

USA / Canada
+801-364-0233

Mexico
+52 (871) 680 7146